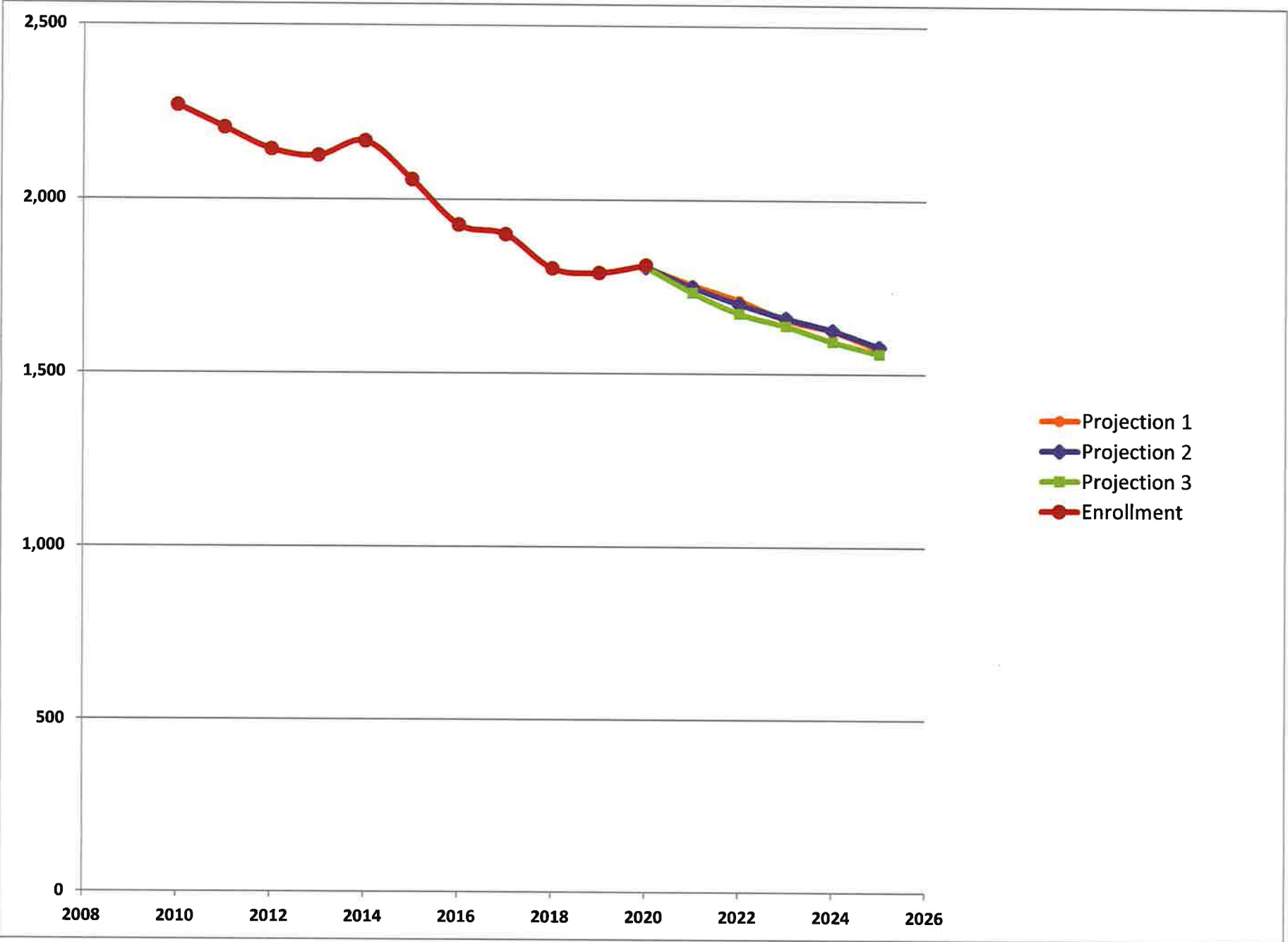
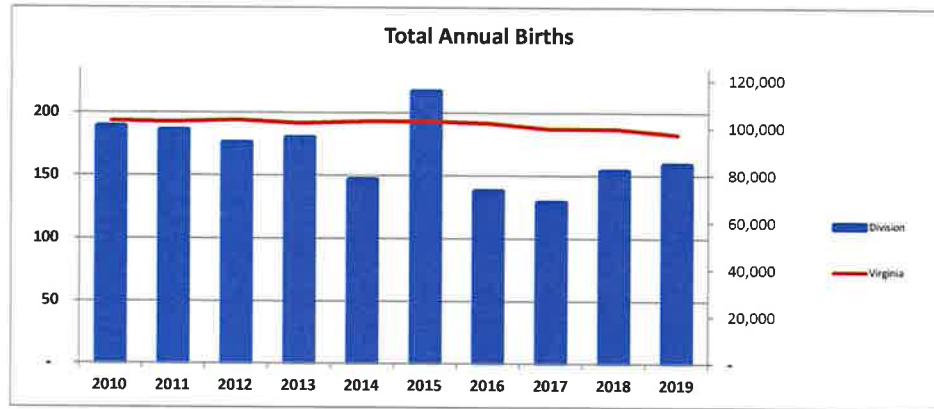
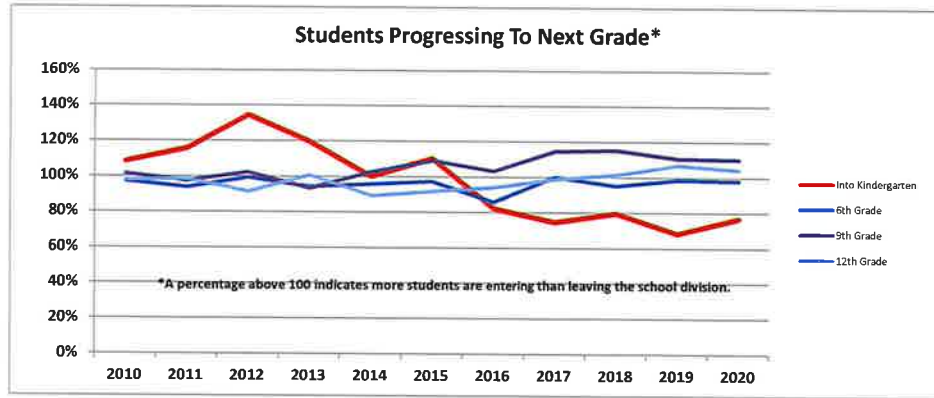


**DEMOGRAPHICS RESEARCH GROUP
WELDON COOPER CENTER**

ENROLLMENT PROJECTIONS FOR MARTINSVILLE

- 1. Projection Chart**
- 2. Demographic Trends**
- 3. Projection 1 (0% re-enrollment)**
- 4. Projection 2 (50% re-enrollment)**
- 5. Projection 3 (100% re-enrollment)**





Birth Totals

	2010	2011	2012	2013	2014	2015	2016	2017	2018	2019
Virginia	102,927	102,508	103,347	101,979	102,808	102,928	102,142	99,652	99,790	97,356
Division	189	186	176	180	147	217	138	129	154	159

Grade Progression Ratios

	Into Kindergarten	1st Grade	2nd Grade	3rd Grade	4th Grade	5th Grade	6th Grade	7th Grade	8th Grade	9th Grade	10th Grade	11th Grade	12th Grade
2010	108%	98%	99%	94%	98%	101%	97%	93%	93%	101%	93%	89%	98%
2011	116%	94%	101%	96%	94%	96%	94%	97%	100%	97%	95%	96%	98%
2012	134%	89%	96%	90%	94%	98%	99%	97%	101%	102%	107%	93%	91%
2013	120%	97%	105%	105%	95%	104%	94%	95%	103%	93%	97%	98%	101%
2014	100%	103%	97%	97%	109%	104%	96%	95%	100%	103%	105%	97%	89%
2015	110%	93%	91%	92%	98%	90%	97%	101%	99%	109%	87%	86%	92%
2016	82%	98%	96%	91%	92%	91%	86%	99%	95%	103%	94%	89%	94%
2017	74%	100%	98%	96%	95%	107%	100%	100%	97%	115%	83%	92%	99%
2018	80%	99%	101%	94%	94%	94%	95%	89%	95%	115%	87%	92%	102%
2019	68%	100%	99%	101%	104%	100%	99%	97%	99%	111%	91%	99%	107%
2020	77%	99%	99%	96%	101%	100%	98%	96%	103%	110%	108%	89%	104%

Fall Enrollment	KG	Grade 1	Grade 2	Grade 3	Grade 4	Grade 5	Grade 6	Grade 7	Grade 8	Grade 9	Grade 10	Grade 11	Grade 12	Total
2020	136	118	121	134	143	141	148	130	155	153	155	123	150	1,807
2021	126	135	117	118	131	143	138	141	126	176	133	146	126	1,756
2022	112	125	135	114	117	128	139	129	137	143	156	126	151	1,712
2023	112	112	124	133	114	116	125	133	126	154	127	150	131	1,657
2024	121	111	111	121	132	113	113	119	129	142	136	121	155	1,624
2025	121	120	111	109	120	131	110	107	116	146	126	130	125	1,572
Change	-15	2	-10	-25	-23	-10	-38	-23	-39	-7	-29	7	-25	-235

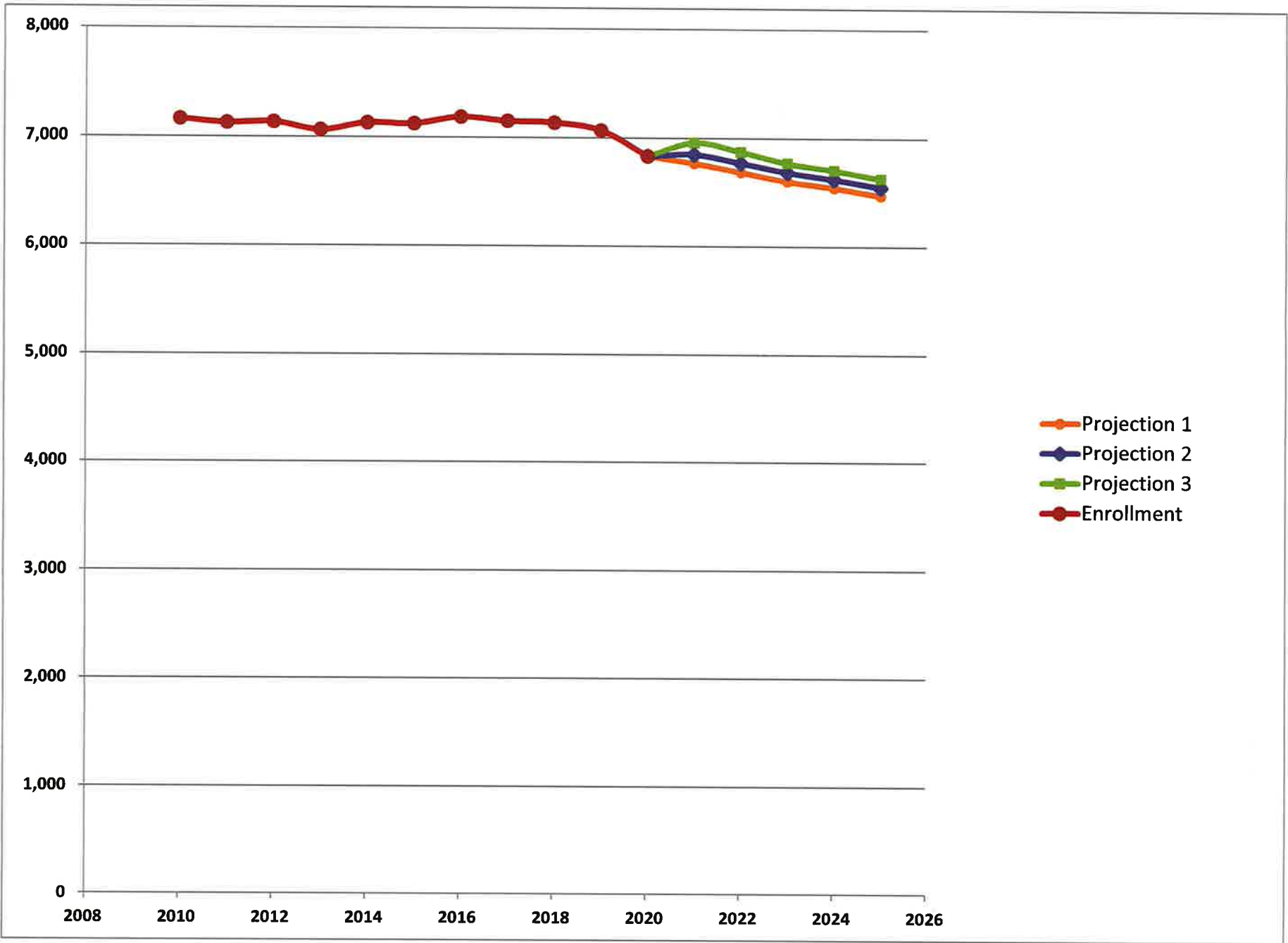
Fall Enrollment	KG	Grade 1	Grade 2	Grade 3	Grade 4	Grade 5	Grade 6	Grade 7	Grade 8	Grade 9	Grade 10	Grade 11	Grade 12	Total
2020	136	118	121	134	143	141	148	130	155	153	155	123	150	1,807
2021	126	142	117	118	132	141	138	141	126	171	136	132	130	1,750
2022	112	125	142	114	117	129	137	129	137	143	151	129	137	1,702
2023	112	112	124	140	114	116	126	131	126	154	127	145	134	1,661
2024	121	111	111	121	139	113	113	120	128	142	136	121	150	1,626
2025	121	120	111	109	120	137	110	107	117	145	126	130	125	1,578
Change	-15	2	-10	-25	-23	-4	-38	-23	-38	-8	-29	7	-25	-229

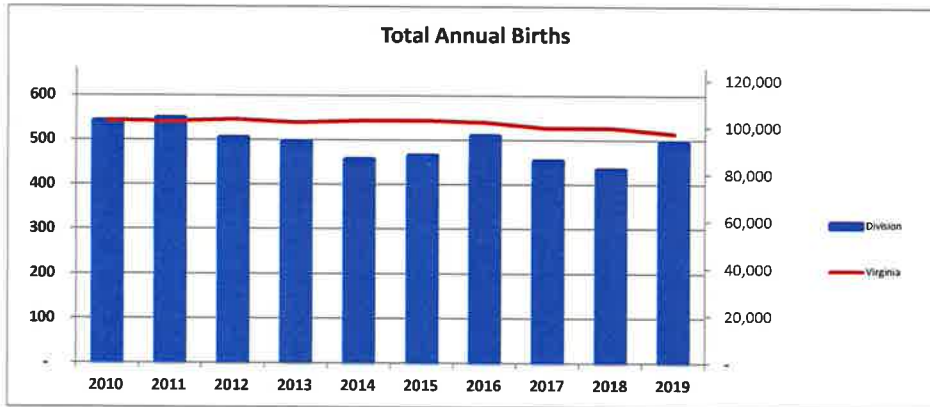
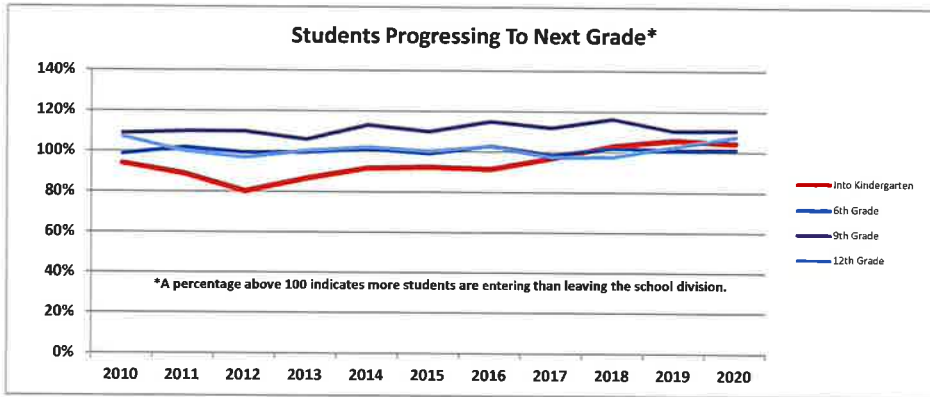
Fall Enrollment	KG	Grade 1	Grade 2	Grade 3	Grade 4	Grade 5	Grade 6	Grade 7	Grade 8	Grade 9	Grade 10	Grade 11	Grade 12	Total
2020	136	118	121	134	143	141	148	130	155	153	155	123	150	1,807
2021	132	148	115	116	134	136	135	144	128	157	144	116	129	1,734
2022	116	129	146	110	112	131	129	130	139	142	140	134	116	1,674
2023	113	113	128	141	107	112	127	123	126	157	124	131	136	1,638
2024	123	112	112	124	138	105	108	120	119	142	139	117	134	1,593
2025	123	122	111	109	123	136	102	104	117	133	126	132	120	1,558
Change	-13	4	-10	-25	-20	-5	-46	-26	-38	-20	-29	9	-30	-249

**DEMOGRAPHICS RESEARCH GROUP
WELDON COOPER CENTER**

ENROLLMENT PROJECTIONS FOR HENRY COUNTY

- 1. Projection Chart**
- 2. Demographic Trends**
- 3. Projection 1 (0% re-enrollment)**
- 4. Projection 2 (50% re-enrollment)**
- 5. Projection 3 (100% re-enrollment)**





Birth Totals

	2010	2011	2012	2013	2014	2015	2016	2017	2018	2019
Virginia	102,927	102,508	103,347	101,979	102,808	102,928	102,142	99,652	99,790	97,356
Division	542	548	504	496	456	465	509	453	434	496

Grade Progression Ratios

	Into Kindergarten	1st Grade	2nd Grade	3rd Grade	4th Grade	5th Grade	6th Grade	7th Grade	8th Grade	9th Grade	10th Grade	11th Grade	12th Grade
2010	94%	100%	96%	102%	99%	98%	99%	99%	102%	109%	89%	91%	107%
2011	89%	99%	97%	98%	100%	101%	102%	99%	101%	110%	91%	94%	100%
2012	80%	105%	99%	98%	100%	100%	99%	103%	98%	110%	92%	92%	97%
2013	87%	101%	97%	96%	98%	97%	100%	98%	99%	106%	93%	94%	101%
2014	92%	99%	101%	97%	98%	101%	102%	101%	104%	113%	89%	97%	102%
2015	92%	103%	97%	98%	101%	100%	99%	103%	100%	110%	92%	91%	100%
2016	91%	103%	102%	102%	102%	101%	103%	102%	100%	115%	92%	90%	103%
2017	97%	99%	99%	99%	100%	98%	99%	103%	100%	112%	89%	91%	97%
2018	103%	100%	99%	102%	99%	101%	102%	102%	100%	116%	88%	91%	98%
2019	106%	99%	101%	99%	96%	101%	101%	101%	99%	111%	89%	90%	103%
2020	105%	100%	96%	97%	97%	97%	101%	98%	98%	111%	89%	92%	108%

Fall Enrollment	KG	Grade 1	Grade 2	Grade 3	Grade 4	Grade 5	Grade 6	Grade 7	Grade 8	Grade 9	Grade 10	Grade 11	Grade 12	Total
2020	413	487	501	520	501	498	597	562	566	609	544	508	528	6,834
2021	509	411	485	502	511	501	501	610	560	640	540	494	505	6,769
2022	467	507	410	488	491	514	508	511	607	634	567	490	494	6,688
2023	458	464	507	410	475	494	520	517	507	681	563	514	494	6,604
2024	497	455	463	508	401	477	499	530	514	572	604	511	514	6,545
2025	497	494	454	464	496	403	483	508	527	580	507	548	513	6,474
Change	84	7	-47	-56	-5	-95	-114	-54	-39	-29	-37	40	-15	-360

Fall Enrollment	KG	Grade 1	Grade 2	Grade 3	Grade 4	Grade 5	Grade 6	Grade 7	Grade 8	Grade 9	Grade 10	Grade 11	Grade 12	Total
2020	413	487	501	520	501	498	597	562	566	609	544	508	528	6,834
2021	509	441	484	512	521	503	512	611	571	645	546	493	503	6,851
2022	467	507	440	487	501	524	510	522	608	647	572	496	493	6,774
2023	458	464	507	440	474	504	530	519	518	683	574	518	500	6,689
2024	497	455	463	508	431	476	509	540	516	585	606	521	518	6,625
2025	497	494	454	464	496	434	482	519	537	582	519	550	523	6,551
Change	84	7	-47	-56	-5	-64	-115	-43	-29	-27	-25	42	-5	-283

Fall Enrollment	KG	Grade 1	Grade 2	Grade 3	Grade 4	Grade 5	Grade 6	Grade 7	Grade 8	Grade 9	Grade 10	Grade 11	Grade 12	Total
2020	413	487	501	520	501	498	597	562	566	609	544	508	528	6,834
2021	488	474	484	522	538	509	524	609	587	640	560	512	514	6,961
2022	448	492	475	487	518	540	516	535	607	666	573	507	514	6,878
2023	446	452	491	477	480	519	545	527	533	687	592	520	505	6,774
2024	485	448	452	494	469	483	526	556	524	604	611	537	521	6,710
2025	488	485	448	453	485	472	489	536	553	590	538	554	541	6,632
Change	75	-2	-53	-67	-16	-26	-108	-26	-13	-19	-6	46	13	-202